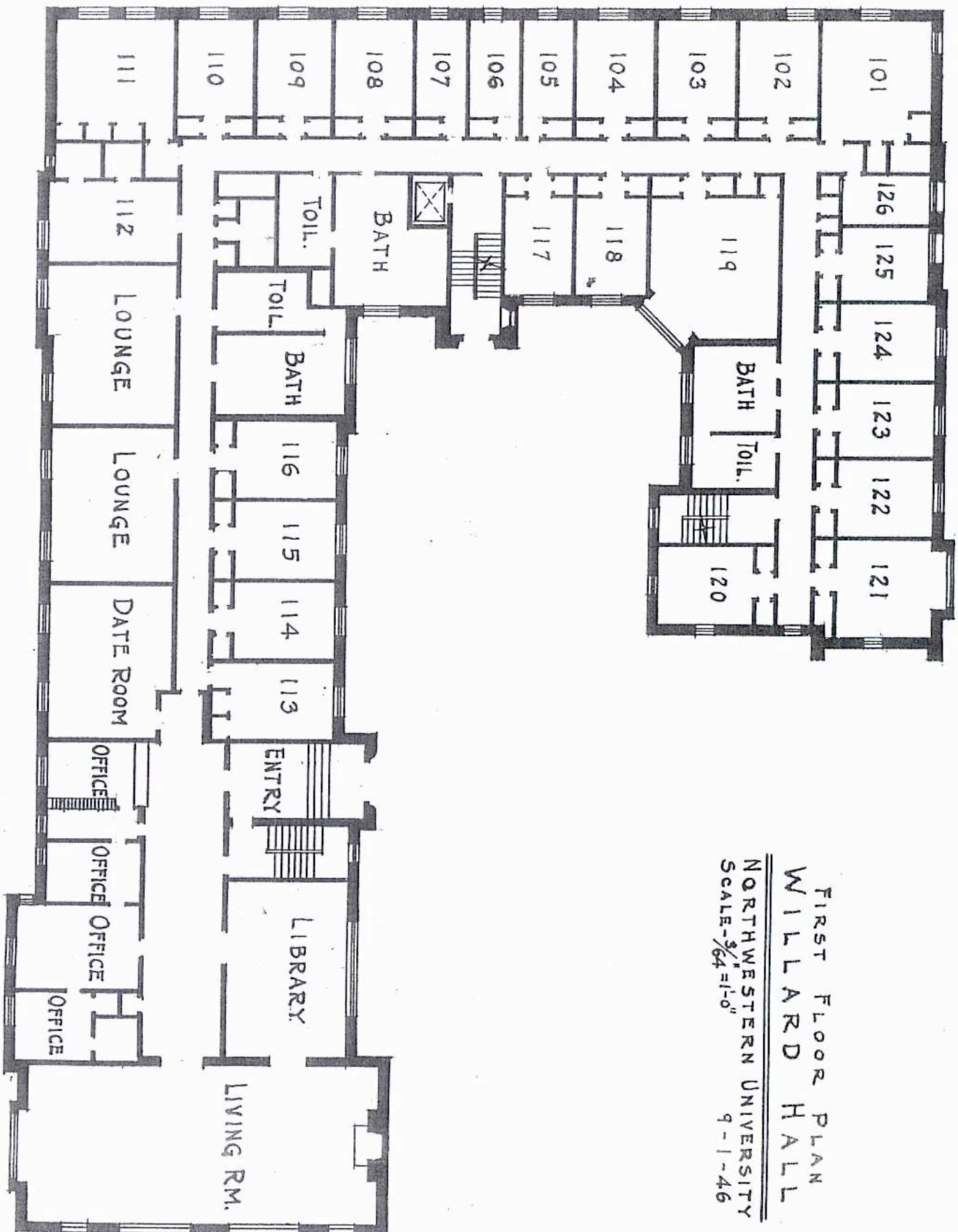


GROUND FLOOR
 1865 Sherman Ave.
 WILLARD HALL

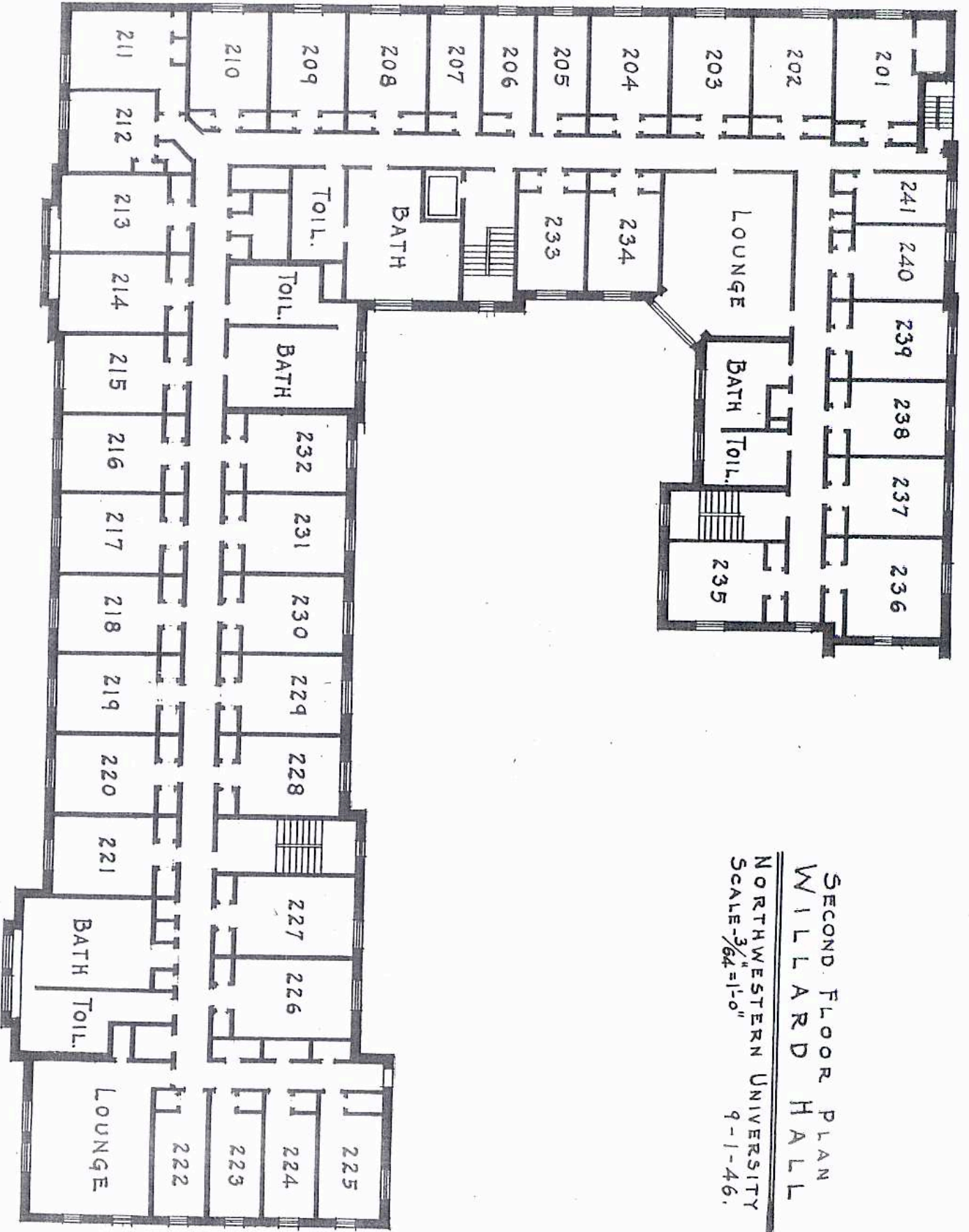
NORTHWESTERN UNIVERSITY

SCALE 3/64" = 1'-0"

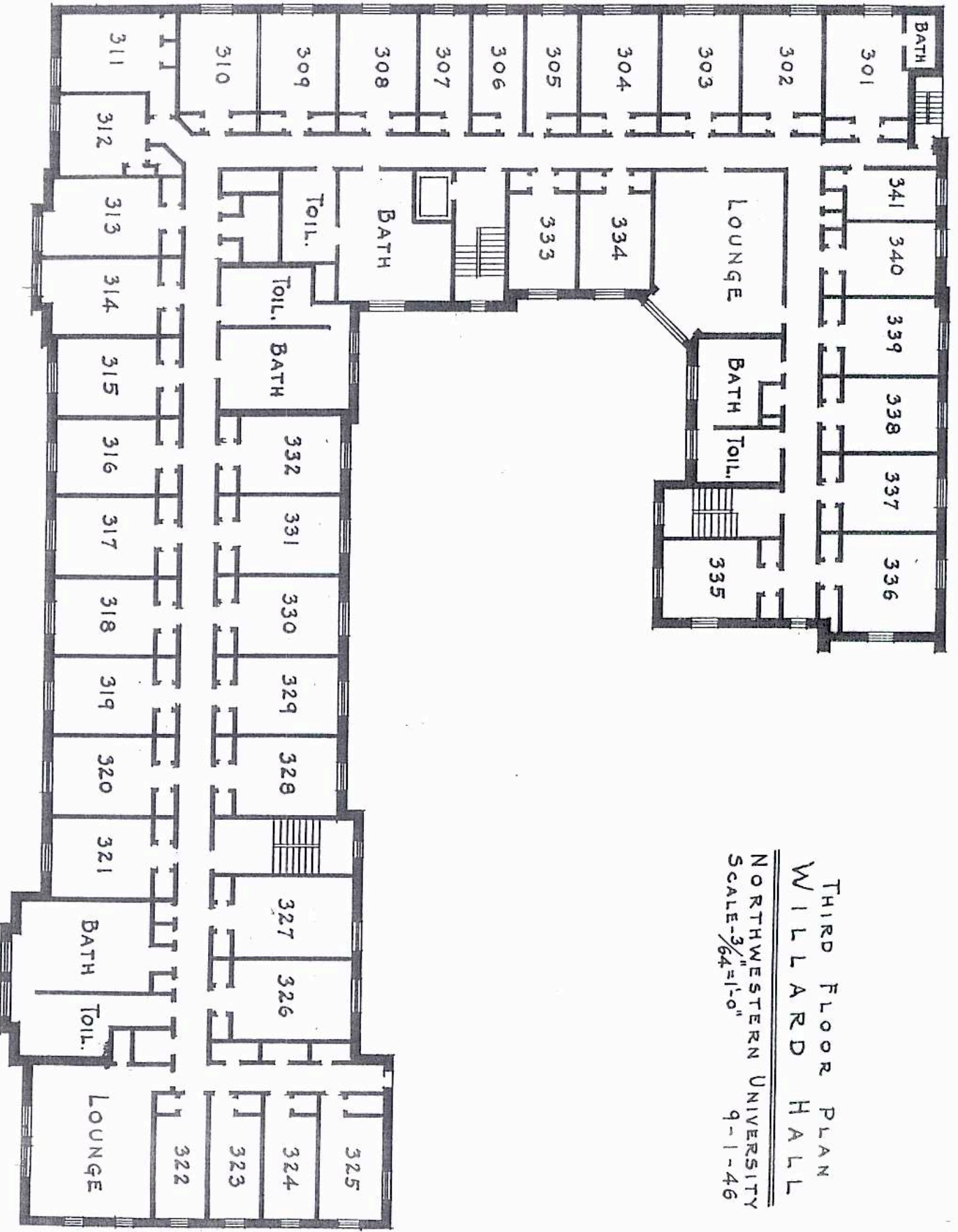
Rev
 9-11-4
 11-5-8
 10/99



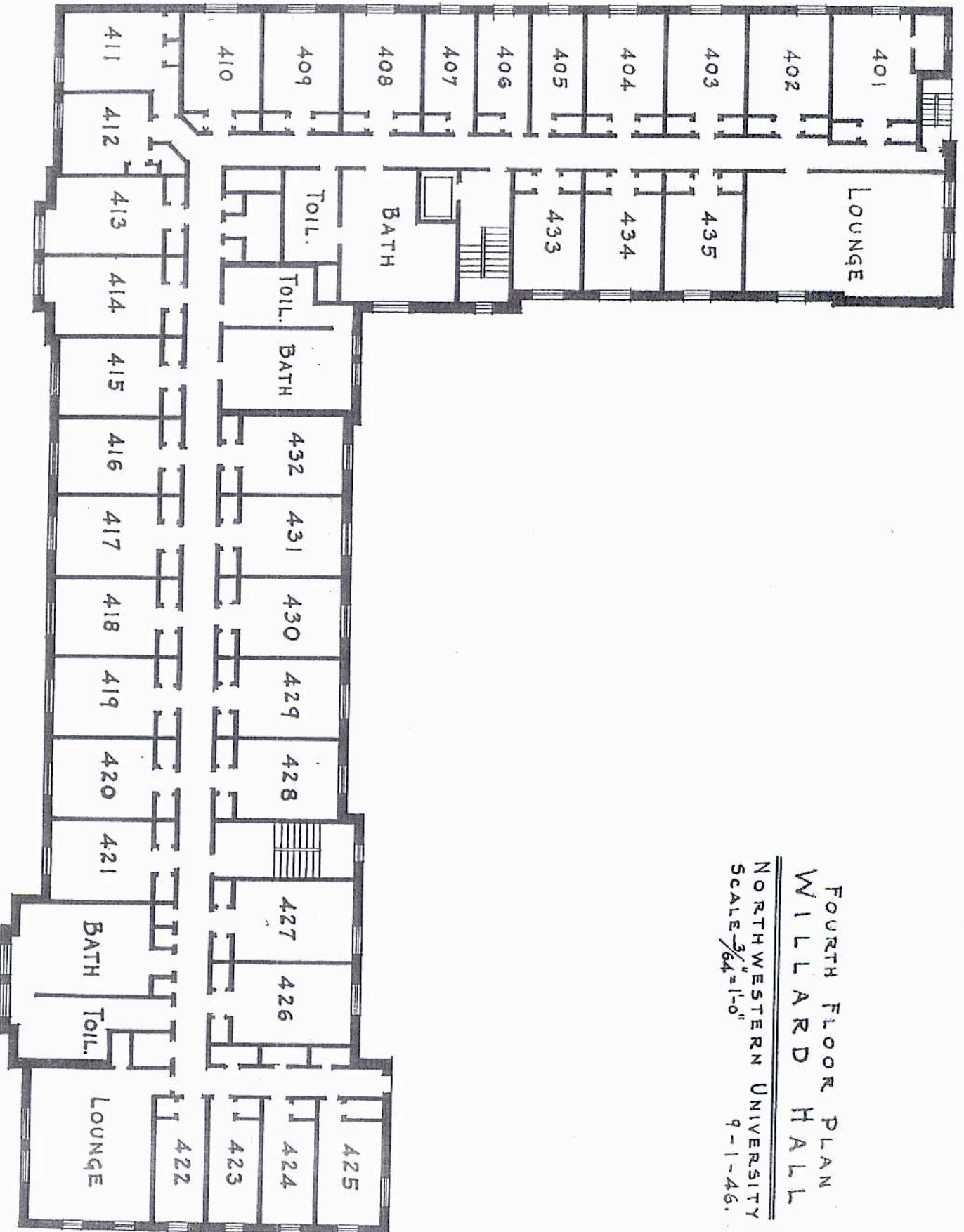
FIRST FLOOR PLAN
 WILLARD HALL
 NORTHWESTERN UNIVERSITY
 SCALE - $\frac{3}{64}'' = 1'-0''$
 9-1-46



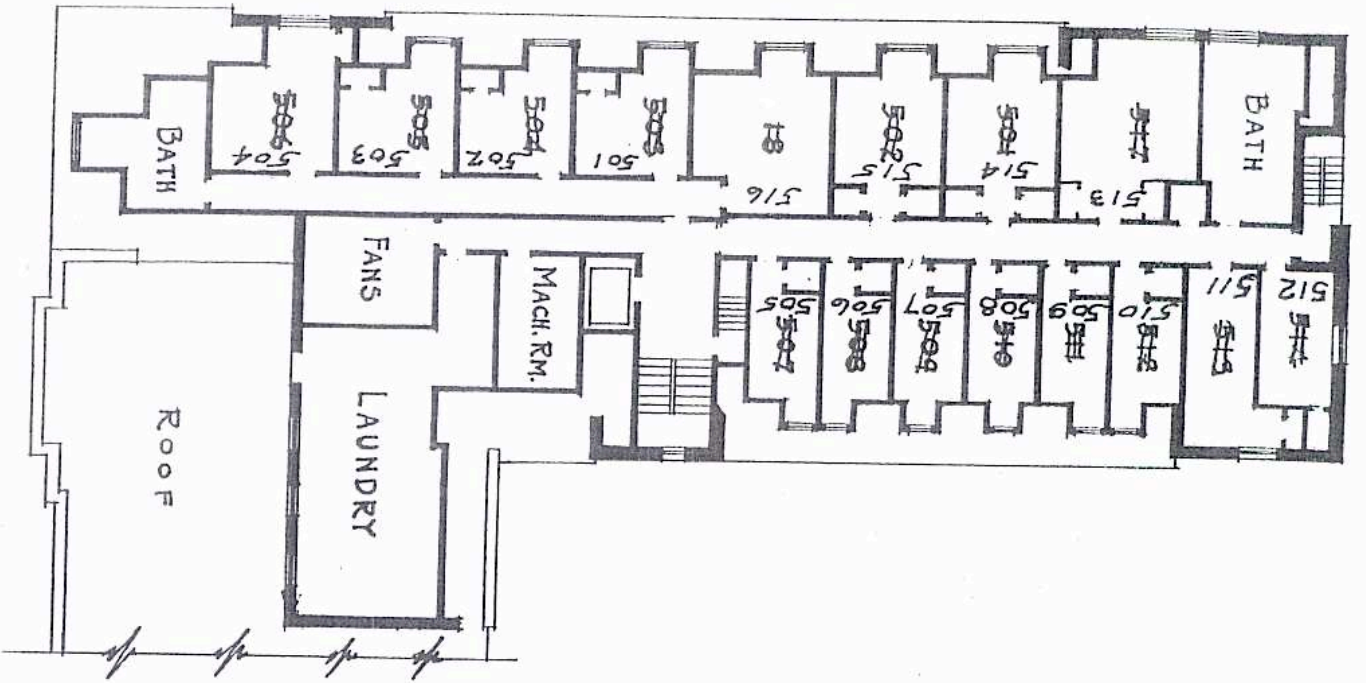
SECOND FLOOR PLAN
 WILLARD HALL
 NORTHWESTERN UNIVERSITY
 SCALE- $\frac{3}{64}$ "=1'-0"
 9-1-46.



THIRD FLOOR PLAN
 WILLARD HALL
 NORTHWESTERN UNIVERSITY
 SCALE- $\frac{3}{64}$ "=1'-0"
 9-1-46



FOURTH FLOOR PLAN
 WILLARD HALL
 NORTHWESTERN UNIVERSITY
 SCALE $\frac{3}{64}'' = 1'-0''$
 9-1-46.



FIFTH FLOOR PLAN
 WILLARD HALL
 NORTHWESTERN UNIVERSITY
 SCALE - $\frac{3}{64}$ " = 1'-0"
 9-1-46.